



  
SHORTLAND  
HORNE

Trusted  
Property Experts

  
SHORTLAND  
HORNE

Quinton Road  
Cheylesmore CV3 5FD

# Quinton Road £1,400 PCM CV3 5FD £1,615 Deposit

An extended three bedroom semi detached property set on a super corner plot conveniently positioned within walking to all the local amenities on Daventry Road and very close to the train station, Coventry city centre and the Memorial Park.

The ground floor offers a larger than average entrance hallway and study area, with doors leading off to a spacious lounge with a feature fire place, a separate dining room with sliding doors leading to the garden. An extended kitchen with fitted units and space for appliances, a spacious pantry and downstairs shower room. On the first floor you will find two double bedrooms, a single bedroom and an extended family bathroom.

Outside there is a paved driveway providing off road parking, a single garage with an up and over door and small fore garden. The rear is a fully enclosed and mainly laid to lawn with mature shrubs and trees and a paved patio area ideal for outside entertaining.

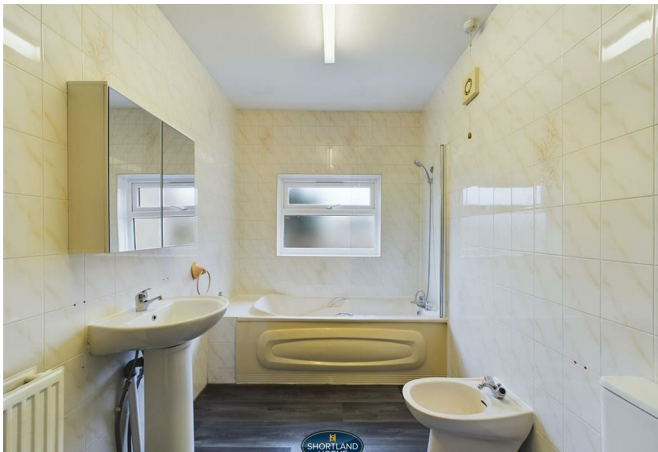
AVAILABLE FROM 1ST DECEMBER | COUNCIL TAX BAND: C | EPC RATING: D

selling quality  
property since 1995

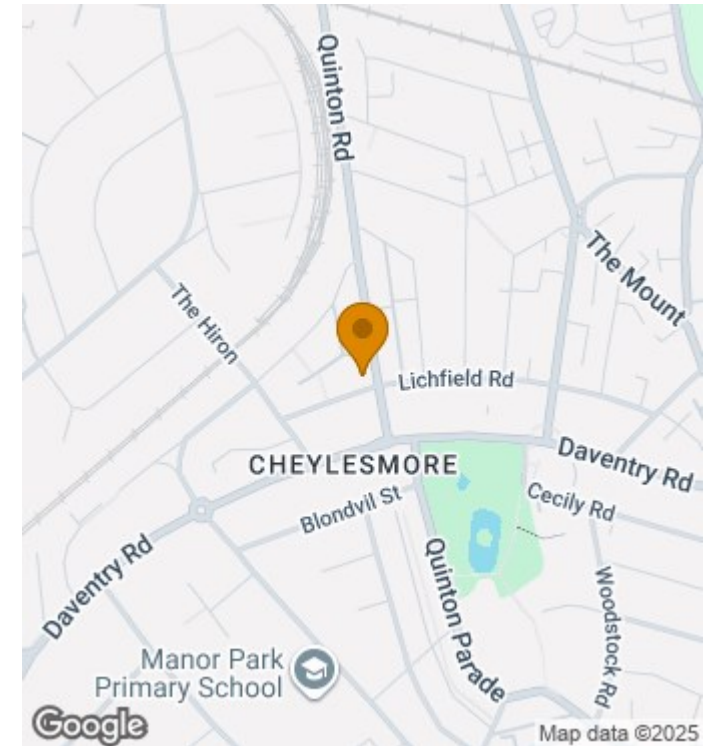




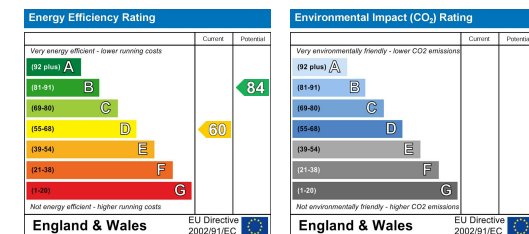




## Location Map



## EPC



### Disclaimer

**Services** All main services are understood to be available. Prospective purchasers are however recommended to verify connection with the appropriate suppliers.

**Fixtures and Fittings** Excluded unless referred to in the sale particulars. Photographs are for illustrative layout purposes only and items shown are not included unless specifically mentioned in contract documentation. Please note: wide angle lens photography may be used, in certain instances, sometimes resulting in slight distortion.

**Viewing** Strictly by arrangement through Shortland Horne.

**Measurements** Room measurements and floor plans are for guidance purposes only and are approximate.

**Purchase Procedure** It is essential to contact our offices before applying for a mortgage or arranging for a survey on this or any other Shortland Horne property to confirm current availability.

**Money Laundering** We have in place procedures and controls, which are designed to forestall and prevent Money Laundering. If we suspect that a supplier, customer/client, or

employee is committing a Money Laundering offence as defined by the Proceeds of Crime Act 2002, we will in accordance with our legal responsibilities disclose the suspicion to the National Criminal Intelligence Service. Intending purchasers will be asked to produce identification documentation at a later stage and we would ask for your co-operation in order that there will be no delay in agreeing the sale.

**Appliances** We would ask that you note that the property may contain appliances that would warrant checking for satisfactory working condition and you may wish to arrange this at your own expense prior to legal commitment.

**Referrals** If Shortland Horne have introduced you to a Solicitor, Mortgage Advisor or Surveyor with whom we have a business relationship we are required by the Code of Conduct published by the NAEA propertymark to notify you that we will receive a referral fee. The fee for these services will vary depending on the transaction and intermediary may make to attract business.

Shortland Horne's Mortgage Advisor is Midland Financial Planning Limited, a partner practices of St. James's Place. For referring business to Midland Financial Planning Limited Shortland Horne will receive up to 50% of any commissions earned. You do not have to use the service of any of our providers and can choose to source the service from someone else. Any advice that is provided will be independent.



Trusted  
Property Experts

📞 02476 222 123

✉️ [lettings@shortland-horne.co.uk](mailto:lettings@shortland-horne.co.uk) 🐦 @ShortlandHorne

🌐 [shortland-horne.co.uk](http://shortland-horne.co.uk) 📍 Shortland-Horne